

How can you participate in the TA&D process?

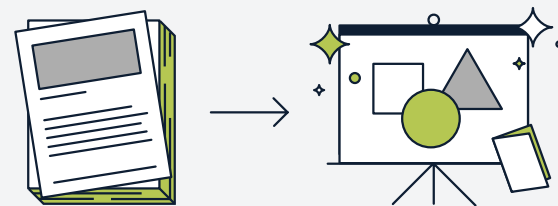
- 1 Attend TA&D update meetings** to gain valuable insights into the innovate research and development of current EPIC projects.
- 2 Participate in technical discussions** focused on how EPIC projects can contribute to SCE's current technology strategy.
- 3 Collaborate with other SCE teams** to deploy innovative technologies that support SCE's overarching corporate mission and goals.
- 4 Integrate the learnings** from these projects in your work and strategic activities that cut across SCE's business units.
- 5 Transfer the outcomes** from these research projects to SCE's current and future DER product development activities.

TA&D Project Lead

Mark S. Martinez

Senior Program Manager
Emerging Markets and Technology
Customer Programs and Services
Southern California Edison

mark.s.martinez@sce.com
626-602-4223 (c)



Technology Assessment & Delivery

Transferring California's electric research activities into innovative products, programs, and services for Southern California Edison customers.

Draft February, 2019

What is TA&D?

TA&D is a process developed by Southern California Edison (SCE) in collaboration with the Electric Power Research Institute (EPRI) for sharing the learnings from the California Energy Commission's (CEC) Electric Program Investment Charge (EPIC) projects.

TA&D reviews and presents opportunities from selected EPIC projects, distilled into engaging presentations and materials that provide real-time updates on the latest advancements in emerging technologies (ET) for electric systems and distributed energy resource (DER) innovation.

What is the TA&D process?



Which projects are now in the TA&D process?

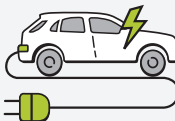
There are five (5) EPIC projects that have immediate relevance for the first phase of TA&D. All five are managed by EPRI as the EPIC awardee, and are focused on demand response (DR) innovation – a dedicated area for SCE’s Emerging Markets and Technology group.



Smart Inverters/Smart Consumer Devices
EPC 14-079
Assess the ability of smart inverters and smart consumer devices to enable “grid-friendly” residential solar sitting on the distribution system.



Transactive Incentive Signals
EPC 15-045
Develop a system to create and communicate transactive energy signals to facilitate more dynamic demand response from California utility customers



EV-Grid Solution
EPC 14-086
Develop an integrated vehicle-to-grid communication system that improves grid stability, and reliability.



Customer Load Management
EPC 15-075
Develop new technologies and applications that enable cost-beneficial energy choices for the customer side of the meter.



DR Control Strategies
EPC 16-026
Develop and pilot test flexible demand response control strategies for water pumping stations and industrial refrigeration plants.